

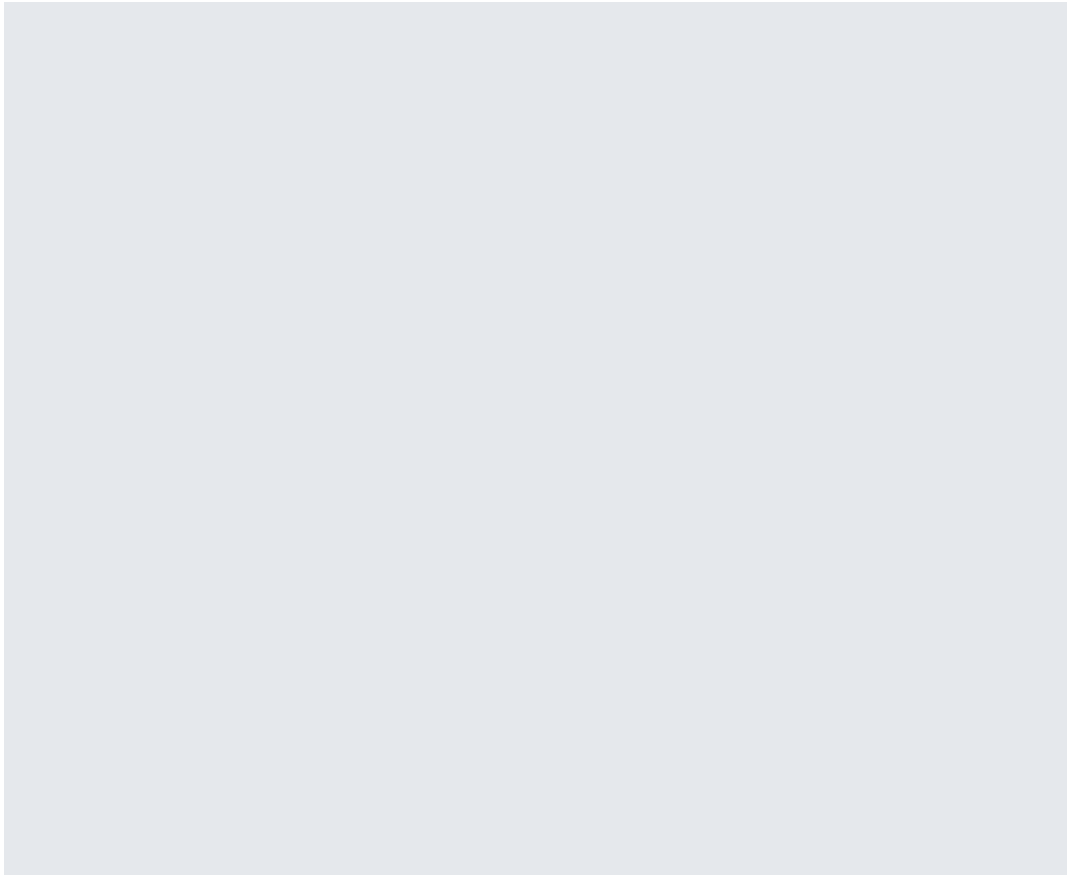
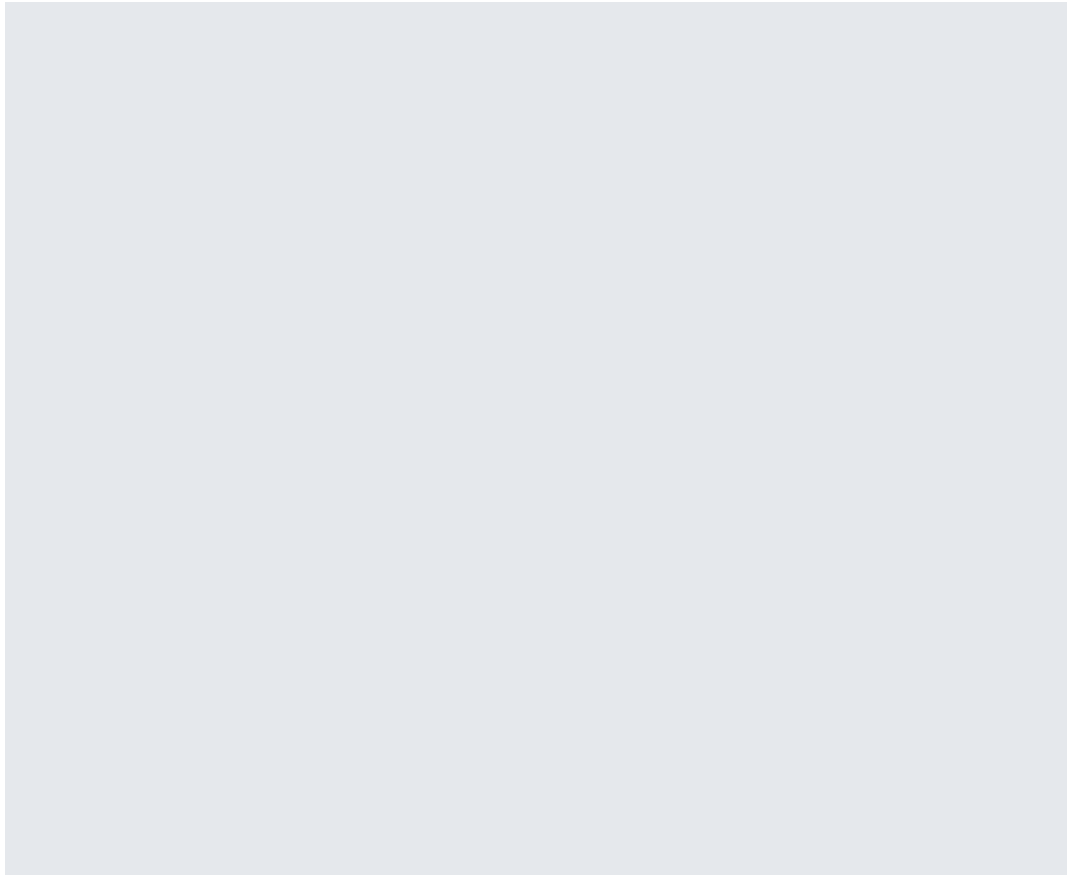


Home Wood Gatacre Hall, Claverley, Wolverhampton, Shropshire, WV5 7AW

BERRIMAN
EATON

Home Wood Gatacre Hall, Claverley, Wolverhampton, Shropshire, WV5 7AW

A superb luxury first floor apartment, set within the impressive Grade II listed Gatacre Hall boasting splendid views from all aspects. This duplex style apartment offers contemporary living whilst retaining traditional charm and benefits from a stunning open plan kitchen and living room, spacious principal bedrooms with adjoining ensuite shower room, further double bedroom and main bathroom. Externally the apartment offers a double garage with parking. Available July 2025 Furnished. A payment of one weeks rent is to be paid upon acceptance of applying for the property and a security deposit of £1955.00 is payable upon completion. (EPC: D) (Council Tax Band D). All material information is readily available from the Agent or via the listing for this property on Rightmove or OnTheMarket.



Tettenhall Office

01902 747744

tettenhall@berrimaneaton.co.uk

Bridgnorth Office

01746 766499

bridgnorth@berrimaneaton.co.uk

Wombourne Office

01902 326366

wombourne@berrimaneaton.co.uk

Lettings Office

01902 749974

lettings@berrimaneaton.co.uk

Worcestershire Office

01562 546969

worcestershire@berrimaneaton.co.uk

www.berrimaneaton.co.uk

Per Month
£1,695 Per Month

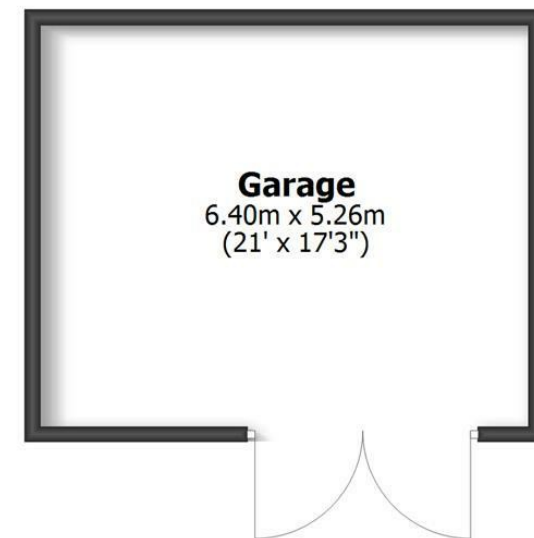
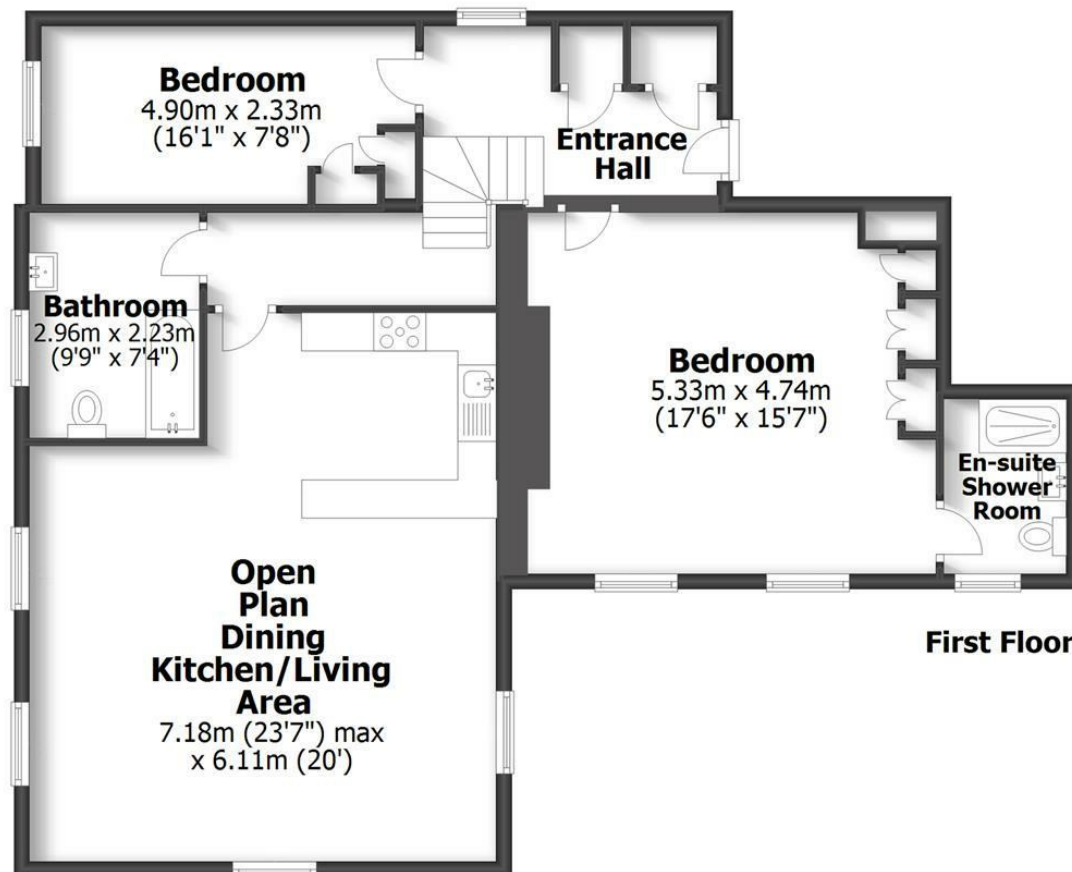
EPC: F

IMPORTANT NOTICE: Every care has been taken with the preparation of these Particulars but they are for general guidance only and complete accuracy cannot be guaranteed. Areas, measurements and distances are approximate and the text, photographs and plans are for guidance only. If there is any point which is of particular importance please contact us to discuss the matter and seek professional verification prior to exchange of contracts.



HOME WOOD

GATACRE HALL, CLAVERLEY



APARTMENT: 103.1sq.m. 1,109.8sq.ft.
GARAGE: 33.7sq.m. 362.3sq.ft.
TOTAL: 136.8sq.m. 1,472.1sq.ft.

INTERNAL FLOOR AREAS ARE APPROXIMATE
FOR GENERAL GUIDANCE ONLY - NOT TO SCALE
POSITION & SIZE OF DOORS, WINDOWS, APPLIANCES
AND OTHER FEATURES ARE APPROXIMATE

